

ATTACHMENT B

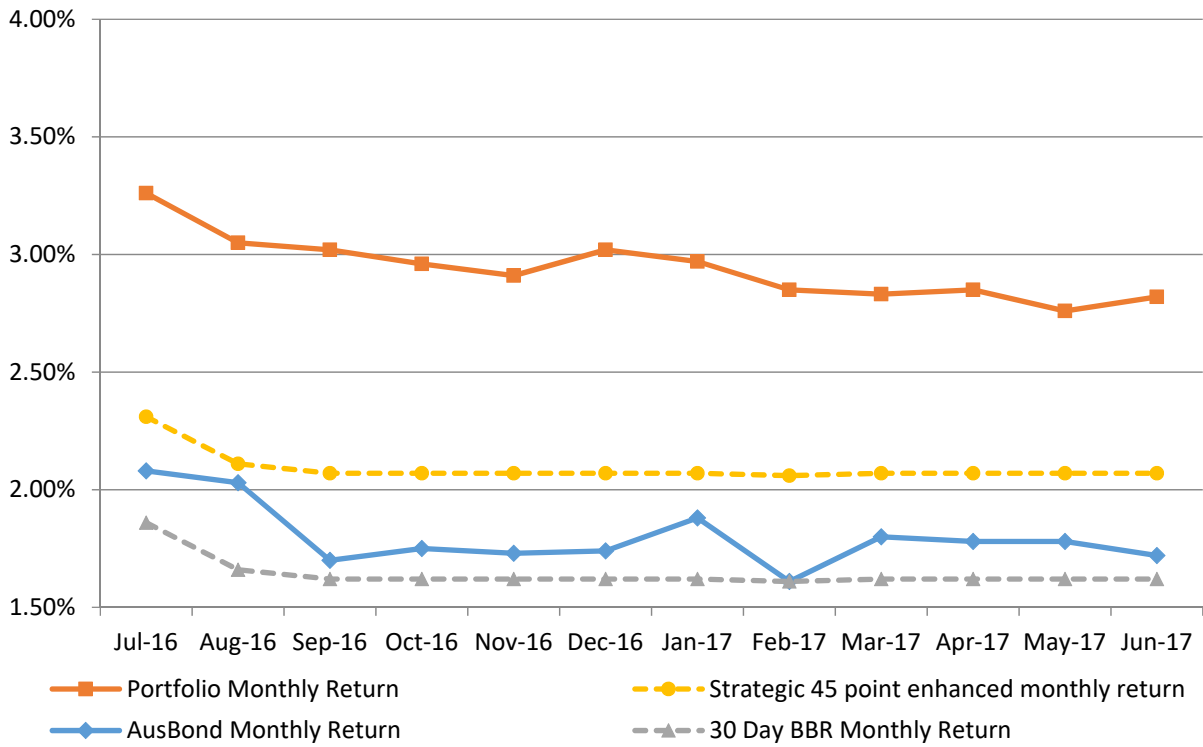
## **ATTACHMENT B**

**INVESTMENT PERFORMANCE  
AS AT 30 JUNE 2017**



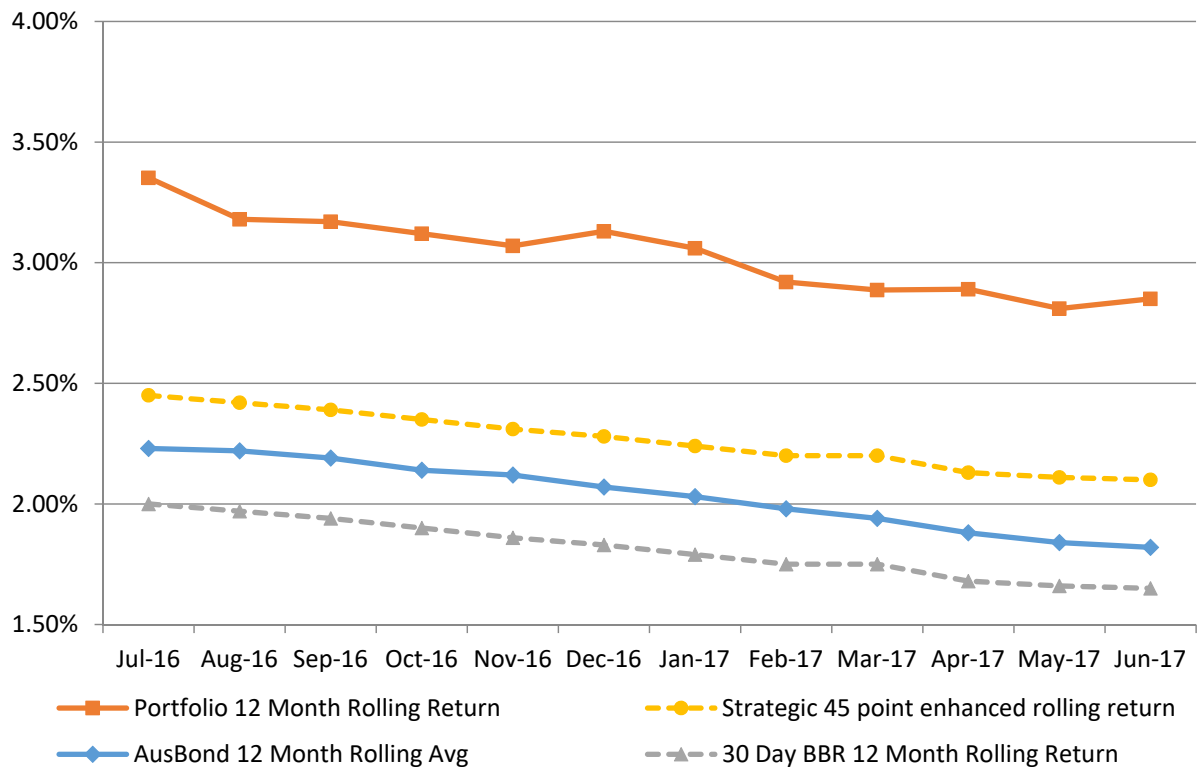
## Monthly Results

**Actual Portfolio vs Strategic Enhanced Benchmark vs AusBond Benchmark vs 30 Day BBR Benchmark  
June 2017**

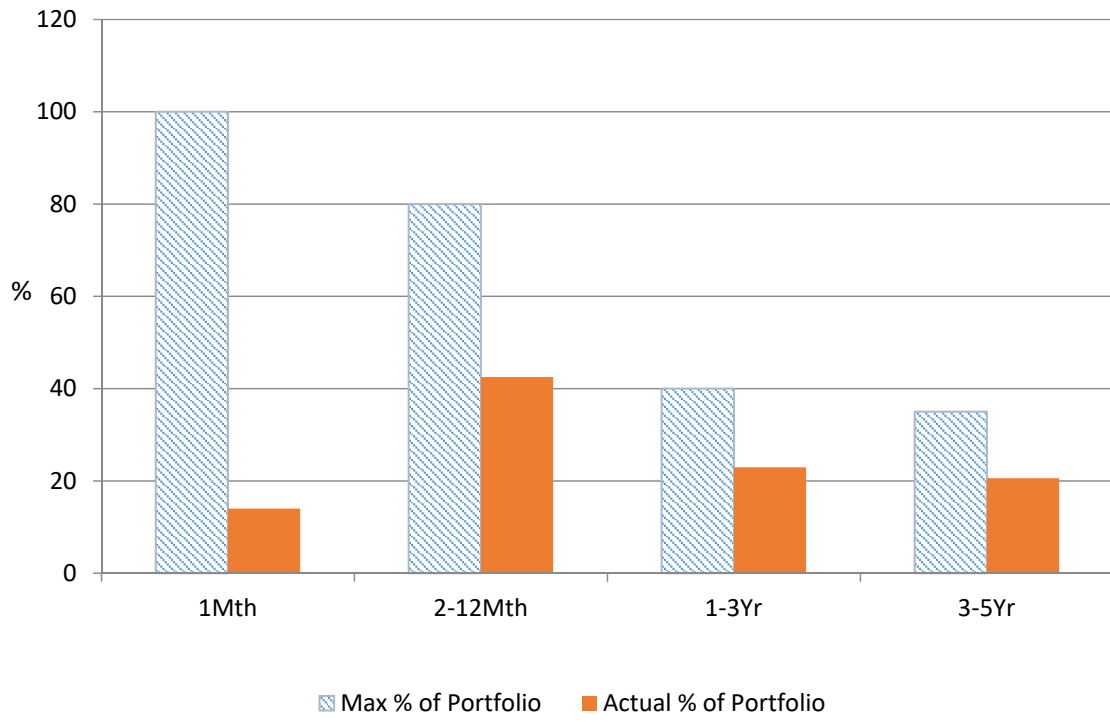


## 12 Month Rolling Averages

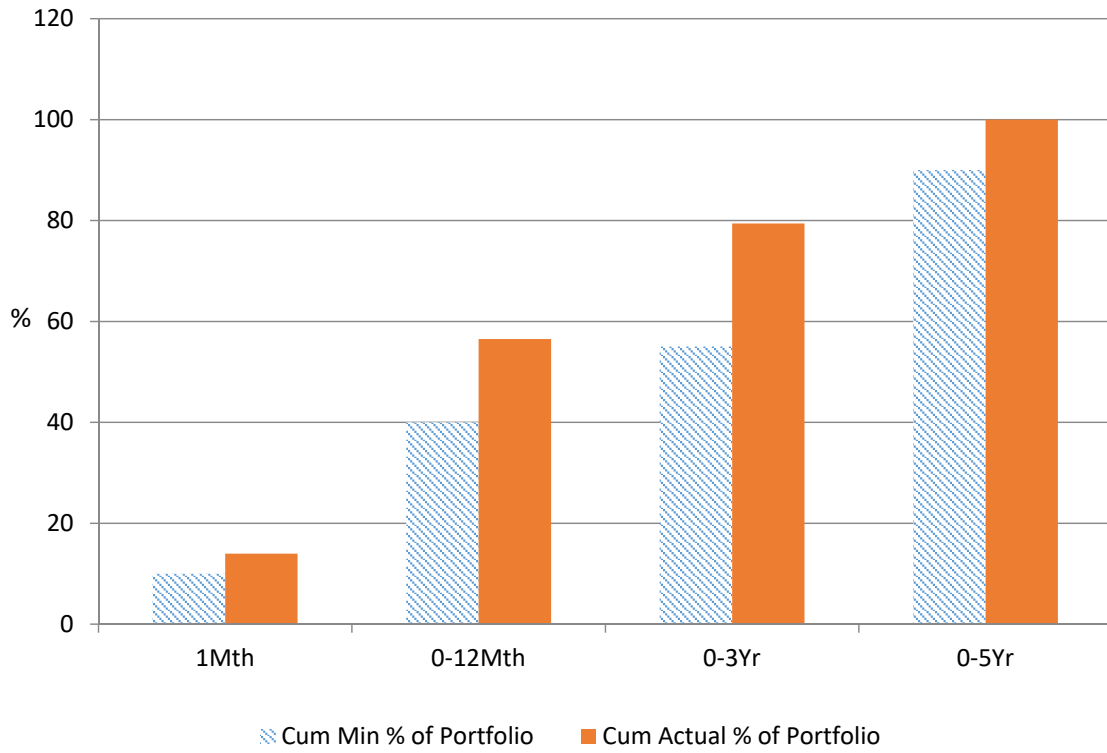
**Actual Portfolio vs Strategic Enhanced Benchmark vs AusBond Benchmark vs 30 Day BBR Benchmark  
June 2017**



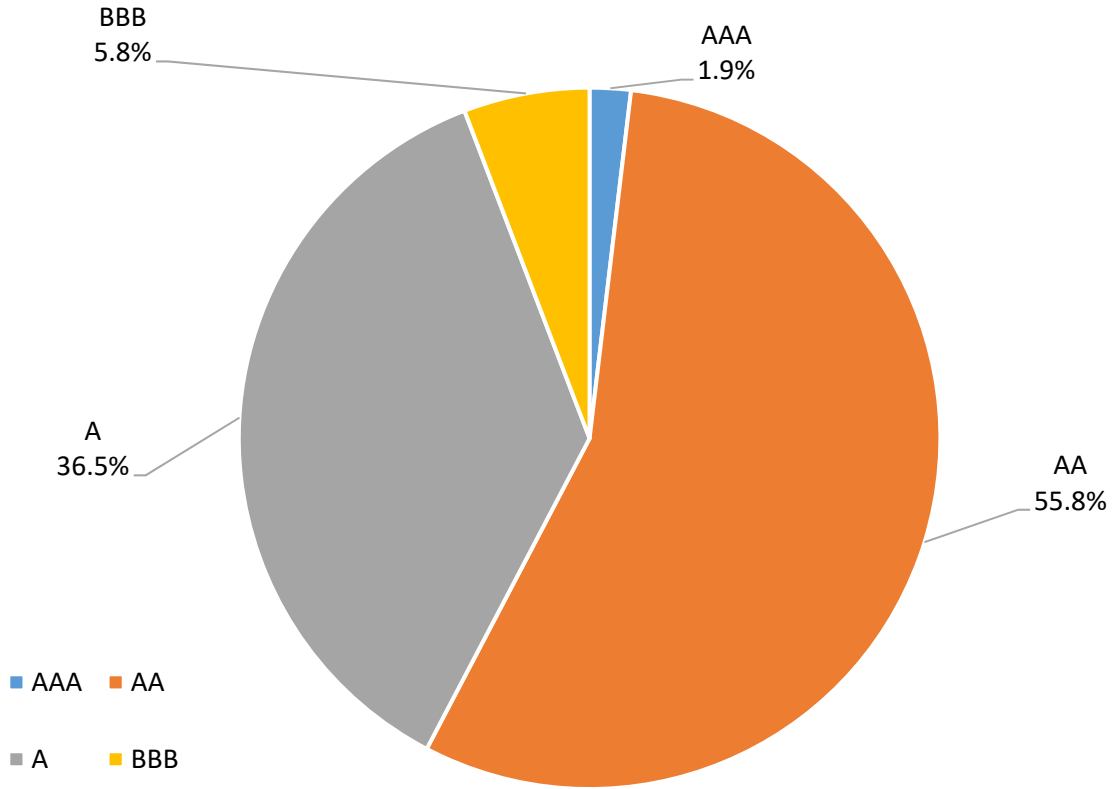
### % Liquidity - Maximum Allowances



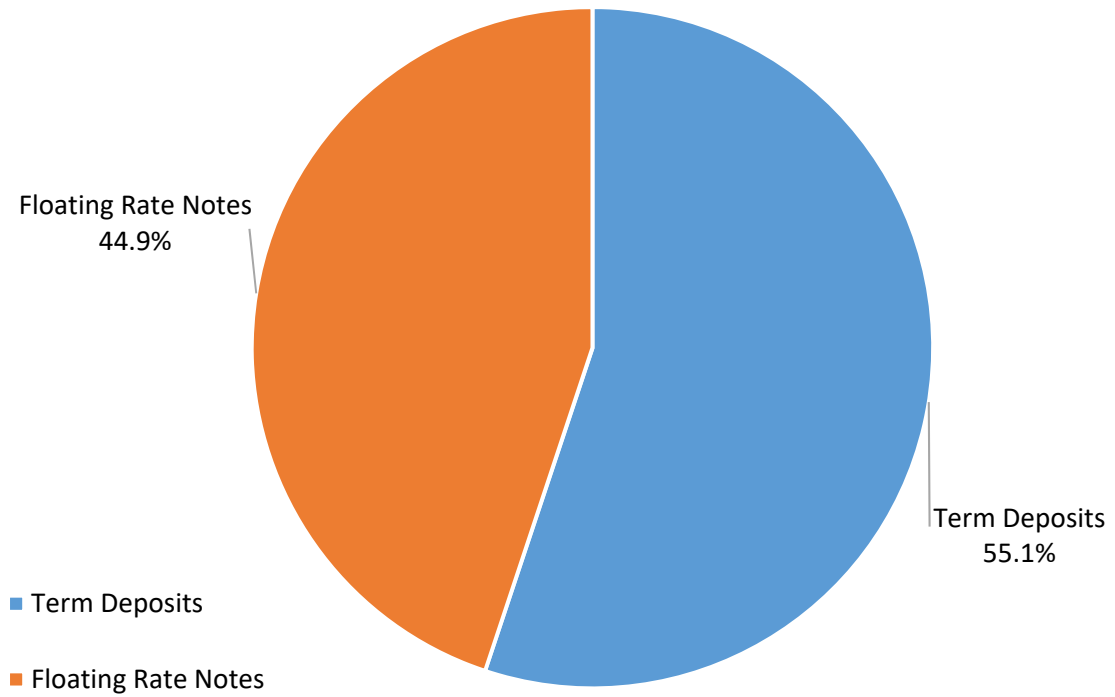
### % Liquidity - Minimum Allocations



### Risk Profile as at 30 June 2017



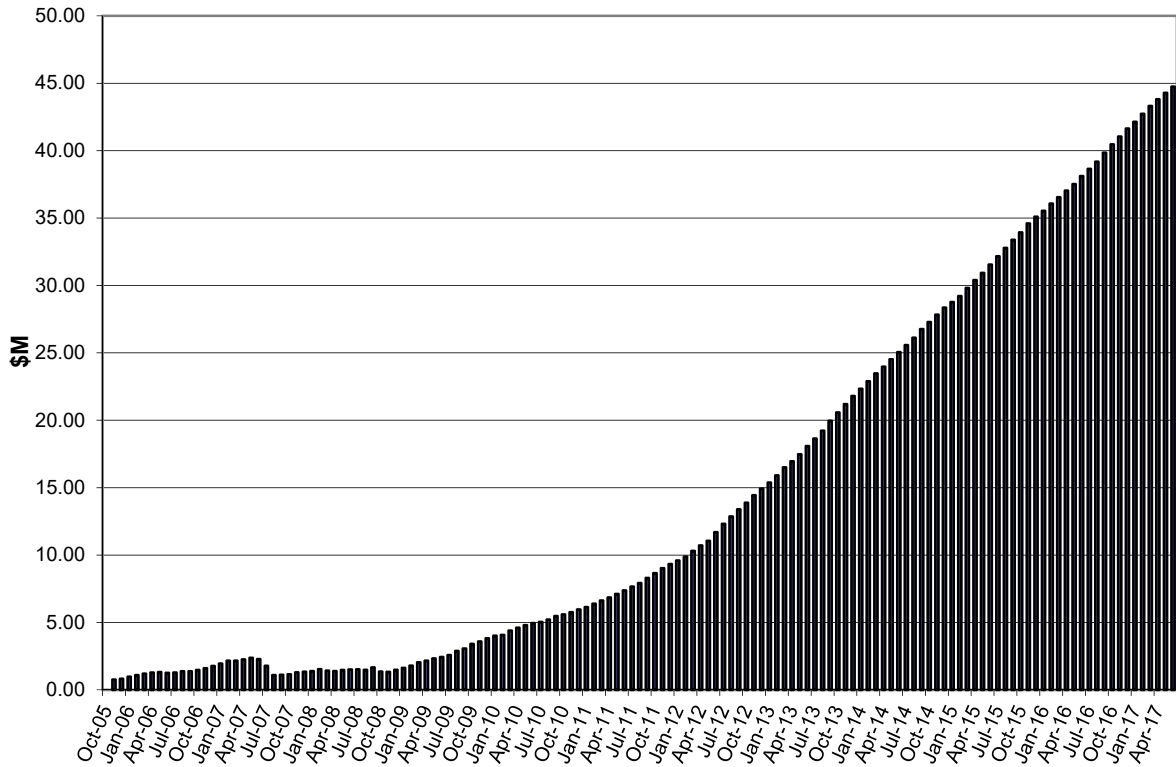
### Investment Product Profile as at 30 June 2017



**INVESTMENT AND CASH DISTRIBUTION BY FINANCIAL INSTITUTION**
**AS AT 30 JUNE 2017**

Institution Category	Financial Institution	Amount \$M	Financial Inst. %	Institution Cat. %
Australian Big 4 Bank (and related institutions)	ANZ Bank	40.0	7.8	
	Commonwealth Bank-related:	68.6	13.4	
	<i>Bankwest</i>	<i>0.0</i>	<i>0.0</i>	
	<i>Commonwealth Bank</i>	<i>68.6</i>	<i>13.4</i>	
	National Aust Bank	65.0	12.7	
	Westpac Banking Corporation-related:	119.3	23.3	
	<i>St George Bank</i>	<i>0.0</i>	<i>0.0</i>	
	<i>Westpac Banking Corporation</i>	<i>119.3</i>	<i>23.3</i>	
<b>Big 4 Total</b>		<b>292.9</b>		<b>57.2</b>
Other Australian ADIs and Australian subsidiaries of foreign institutions	AMP Bank Ltd	5.0	1.0	
	Bank of China-Sydney Branch	5.0	1.0	
	Bank of Communication	5.0	1.0	
	Bank Of Queensland	35.0	6.8	
	Bendigo and Adelaide Bank	21.0	4.1	
	CUA Limited	45.0	8.8	
	Greater Bank	5.0	1.0	
	IMB	5.0	1.0	
	Members Equity Bank	42.0	8.2	
	Newcastle Permanent Building Society	17.0	3.3	
	Royal Bank of Canada - Sydney	9.5	1.9	
	Suncorp Bank	25.0	4.9	
<b>Other ADI Total</b>		<b>219.5</b>		<b>42.8</b>
<b>Grand Total</b>		<b>512.4</b>	<b>100.0</b>	<b>100.0</b>

### Cumulative Outperformance over AusBond Benchmark 2005 - 2017



### Cumulative Outperformance over 30 Day BBR Benchmark 2005 - 2017

